



CONTROL UNIT ELS RFID MF



Description:

Control unit ELS RFID MF is used in Metra Electronic Locking System (ELS) which is primarily designed and used for locking lockers.

Control unit ELS RFID MF has two basic components: Control unit PCB and Display unit. Control unit PCB drives and monitors up to 16 directly connected Metra Electronic Locks (see also: Electronic Lock) and other enhancing accessories.

Display Unit (also connected to CU PCB) is the products user interface. It consists of a 4-digit LED display to show locker numbers (and other UI messages) and a contactless Mifare RFID reader.

Enhancing accessories:

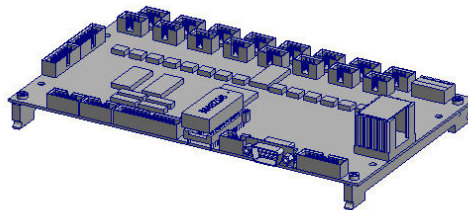
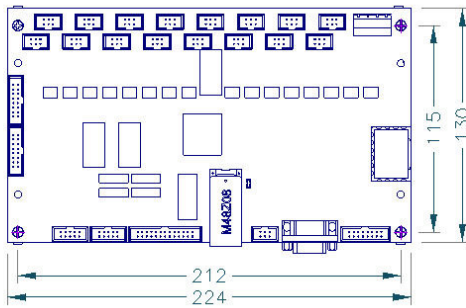
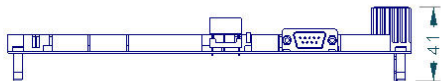
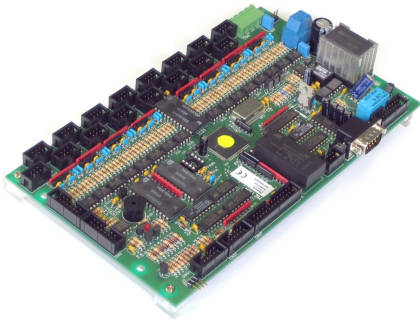
- Euro deposit pad limits locker misuse
- Coin acceptor generates revenue from locker use

Product can be used totally independent of Metra network. Wiring all the Control units into a network and adding a Network controller ELS enables additional alarm notification and remote unlocking of locks by pushbutton.

Operating parameters are set up through a special setup keypad and stored in internal battery powered memory. To simplify setup of control units and master key management also Metra ELS SW can be used.

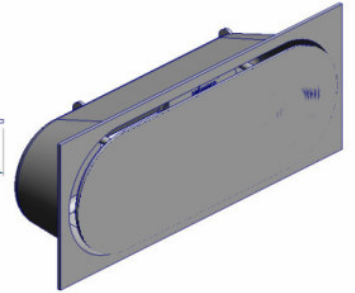
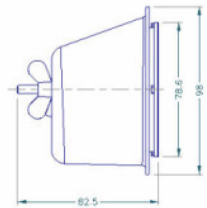
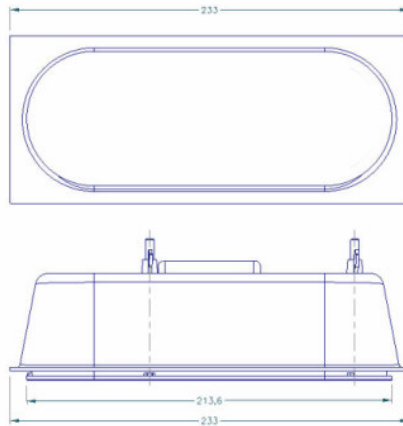
- **Controls up to 16 Electronic Locks**
- **User interface: 4-digit LED display and contactless Mifare RFID reader**
- **Master keys stored in internal memory**
- **Alarm for attempt of brake in**
- **Euro deposit pad or Coin Acceptor add on**
- **Setup through special setup keypad or Metra ELS software**

Technical data – Control Unit PCB:



- Power 12 V DC / 0,5 A
- 16 connectors for Electronic Locks (6-pole)
- Display Unit connector (26-pole)
- Setup Keypad connector (10-pole)
- Metra network
- Coin Acceptor connector
- Control Unit Box door sensor input - tamper
- Audio beeper
- RS 232 communication channel for parameters setting and device info
- Non volatile memory to store operational parameters and up to 150 Locker events
- Temperature working range: -10 °C up to +50 °C
- Measures in mm (w/h/d): 224 / 41 / 130

Technical data – Display Unit:



- Powered from Control Unit; Can not operate without Control Unit
- Connector (26-pole) to attach to Control Unit
- 4 digit 7-segment LED display
- Supports Mifare RFID Media
- Temperature working range: -10 °C up to +50 °C
- Measures in mm (w/h/d): 214 / 79 / 83

How to order?

ORDER CODES for Control Unit:

1	2	3
EL	CU	MF

Column 1:

EL ... Supports standard RFID Tickets

Column 2:

CU ... Control Unit

Column 3:

MF	*Mifare reader. Reads all ISO14443 A/B compatible RFID Tags.
----	--

ORDER CODES Accessories

Setup keypad:

Operating parameters and Master RFID Keys can be defined with this device. It is connected to Control Unit by 10-pole flat cable.



ORDER CODE:
ELSK

Coin Acceptor:

Connected to Control Unit when Locker usage has to be paid.



ORDER CODE:
ELCAEU__*

***Note:**

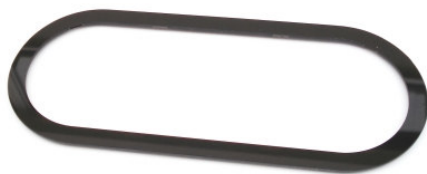
Coin	Order code
0,5 EUR	ELCAEU05
1 EUR	ELCAEU1
2 EUR	ELCAEU2

EURO Deposit Pad



ORDER CODE:
SA000319

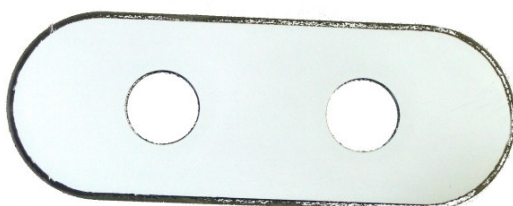
Oval frame for surface mounting, black, 5mm thick



ORDER CODE:
EB000663

Display mounting model

Tool with same measures as display unit. It's used to mark, prepare or test the cutout for display unit in advance.



ORDER CODE:
EB000315